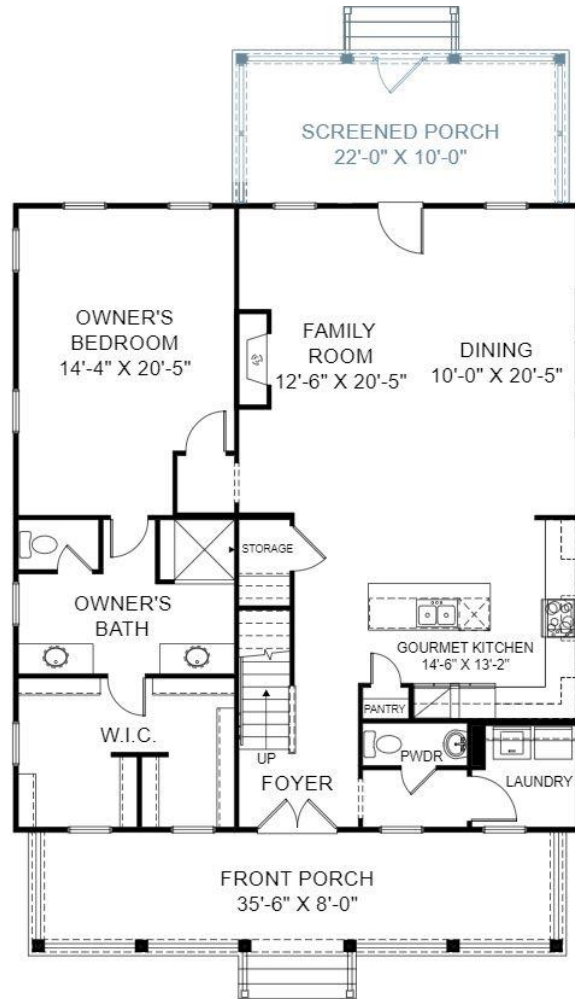
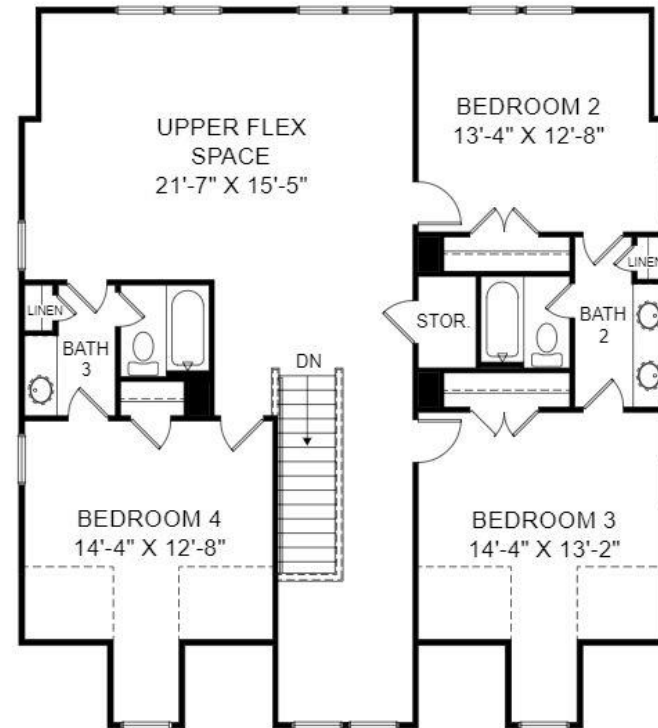


THE TIDALVIEW AT OLDFIELD

Home Site 433 | 4 Bedrooms | 3.5 Bathrooms | 3,080 Square Feet



Main Level



Upper Level

17 Great Heron Way, Bluffton, SC, 29909



The floorplans are for general illustration purposes only and are not binding in any way. All dimensions are approximate. Actual product and specifications (including window, doors and room layout) may vary in dimension or detail from the illustration shown, may vary with each different elevation available for a particular floorplan, and are subject to change without notice. Optional features shown may not be available in all communities or for all home sites. Certain optional features must be purchased together or must be purchased for a particular home site. See the actual architectural plans for clarification of dimensions and optional features for each home, elevation and home site. Please consult the Neighborhood Sales Manager for detailed specifications. This brochure is for illustrative purposes and not part of our legal contract. ©Stanley Martin Companies, LLC | 02/2020

