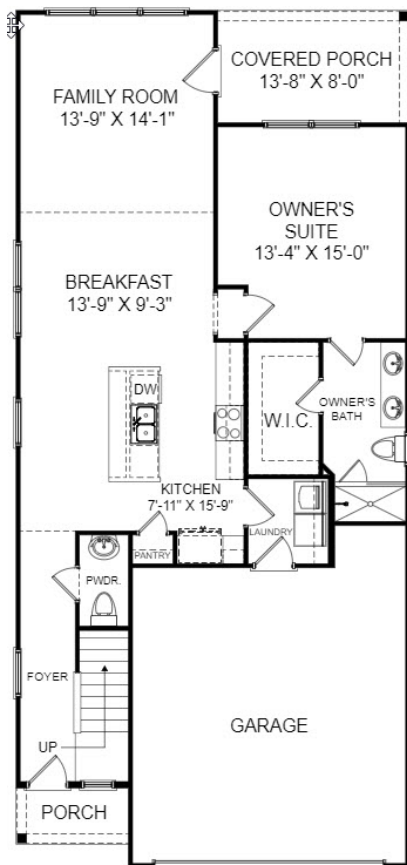
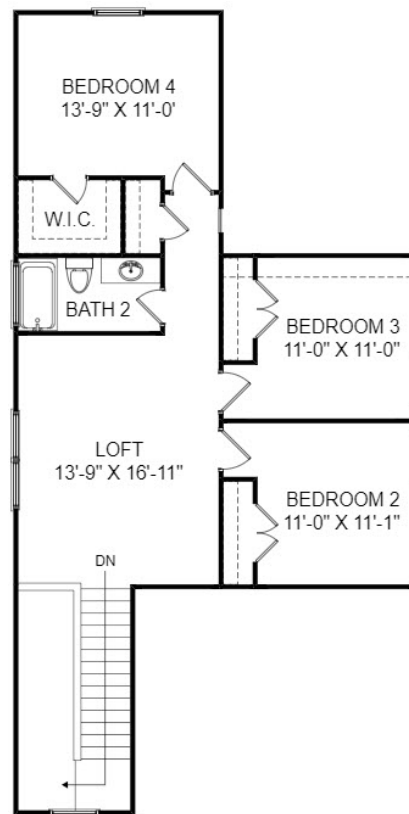


# THE CADE AT BEXLEY PARK

Home Site 55 | 4 Bedrooms | 2.5 Bathrooms | 2,046 Square Feet



Main Level



Upper Level

920 Bryden Lane, Boiling Springs, SC 29316

©Stanley Martin Homes | In our continued effort of design enhancement, actual product may vary in dimension or details from these drawings and are subject to change without notice. Please consult the Neighborhood Sales Manager for detailed specifications. This brochure is for illustrative purposes and not part of our legal contract.

